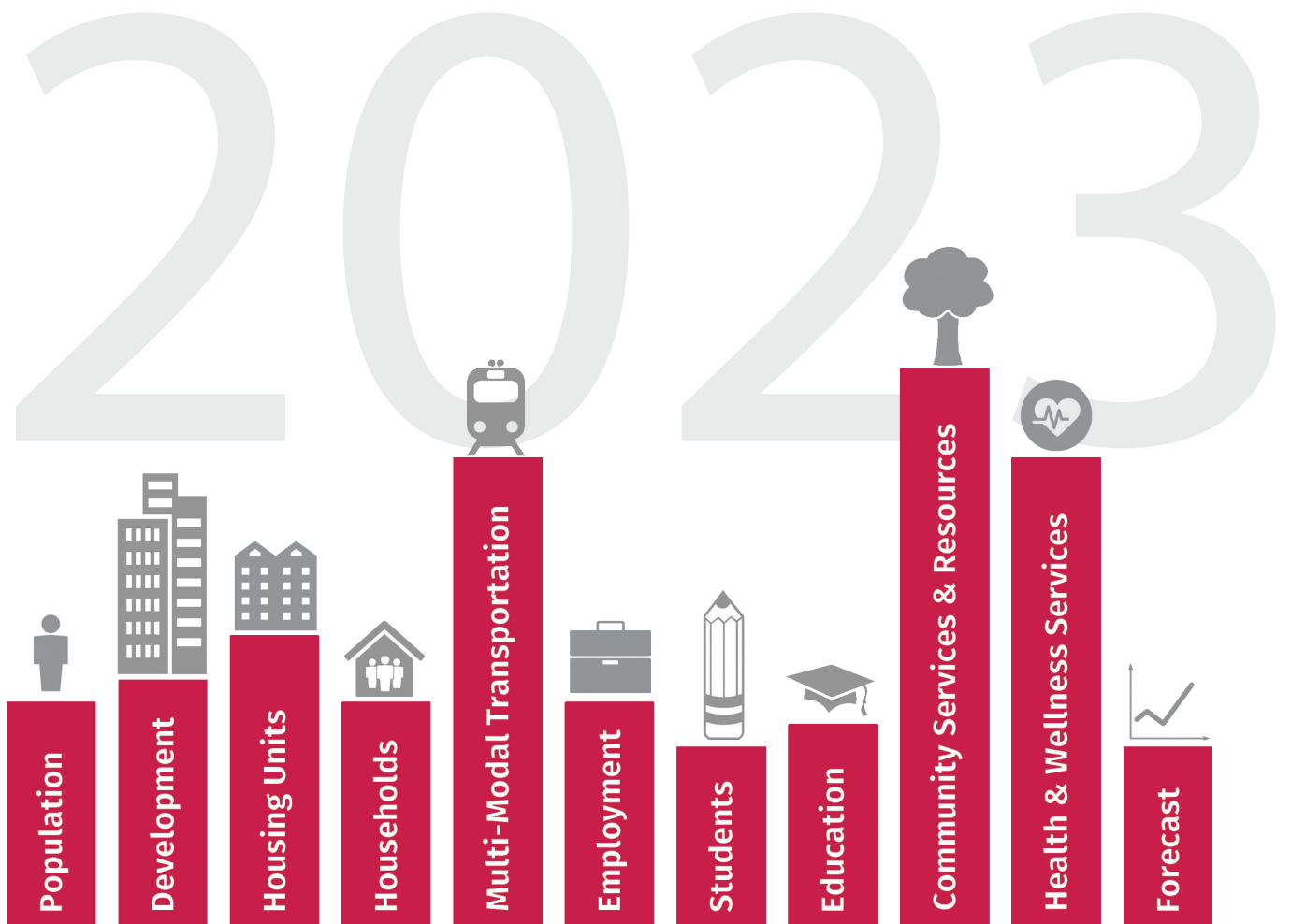


PROFILE

2023



Contents

- 1 Fast Facts
- 2 Land Use & Development
- 3 Population
- 5 Housing
- 7 Households
- 9 Employment
- 11 Development
- 13 Schools & Education
- 15 Multi-Modal Transportation
- 17 Community Services & Resources
- 18 Health & Wellness Services
- 19 Forecast
- 21 Glossary

Arlington County Vision

“Arlington will be a diverse and inclusive world-class urban community with secure, attractive residential and commercial neighborhoods where people unite to form a caring, learning, participating, sustainable community in which each person is important.”

— Arlington County Board

Message from the Director

The Profile, an annual statistical fact book of Arlington County, has been produced by the Department of Community Planning, Housing, and Development (CPHD) since 1982. This report combines countywide data and provides a comprehensive outlook of the most current data on population, housing, employment, development, transportation, and community services. The Profile data are used to obtain an understanding of our community; for planning future services and needs; to guide policy decisions; to secure grant funding; and to promote equitable solutions for all Arlingtonians.

Due to the COVID-19 pandemic, the U.S. Census Bureau delayed the release of the 2020 Census results. In August 2021, 2020 Census Redistricting Data was released which only included the population totals for race categories, population age 18+, housing units, and group quarters. The detailed population and housing files containing population by age, origin, households, housing, and many cross tabulations of variables are anticipated to be released after summer 2023. Once the complete 2020 datasets are released, CPHD will prepare and release 2020 Census reports and other resources. The most recent American Community Survey (ACS), 2017-2021 5-Year Estimates, were released in December 2022 and have been incorporated into this Profile update.

Profile 2023 includes statistics from across departments. Once again, we can observe the impacts but also the community’s recovery from the COVID-19 pandemic. Many in-person services have increased dramatically from the previous year. These increases include: library events and program attendees by 171% and 248%, respectively; Enjoy Arlington Recreation & Fitness Class enrollment by 267%; and the DHS main service center opened seeing 24,849 people. We also continue to see changes in Arlington’s workforce. Due to high vacancy rates and a new job estimates methodology that realigns jobs to the built environment, there was a drop in employment by 12,600 from the previous year. It is estimated that an additional 2,000 people are self-employed, and 7% more Arlingtonians are working from home. These impacts were accounted for in the MWCOC Forecast Round 10.0, completed in the fall of 2022.

In addition to the Profile 2023 report, an interactive planning corridors visualization tool is available on the Profile webpage (<https://www.arlingtonva.us/Government/Projects/Data-Research/Profile>) and supports the comparison of demographics across the Rosslyn-Ballston, Richmond Highway, and Columbia Pike Corridors with the rest of the County. All data found in the Profile are available through the Arlington County Open Data Portal.

Thank you to all the staff and departments involved in updating the annual Profile report.

I hope you find the information provided in the 2023 update helpful as we all work together to achieve Arlington County’s vision.



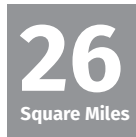
Claude A. Williamson, AICP
Director, CPHD

CPHD Mission Statement

Promoting the improvement, conservation and revitalization of Arlington’s physical and social environment.

Location

Arlington is an urban county of about 26 square miles located directly across the Potomac River from Washington DC.



People



53% of Arlington's population live in planning corridors, which are 4-times more dense than the Non-Corridor Areas (map on page 2).



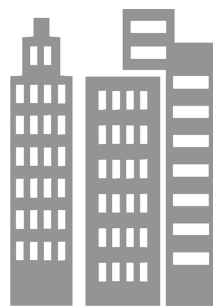
Arlington is one of the most highly educated localities in the Nation, with 76% holding a bachelor's degree or higher, making it #1 among all counties.



An estimated 21% of Arlington's population work at home.

Development

With 42 million square feet of rentable building area, Arlington has more private office space than the Central Business Districts of Los Angeles, Charlotte, Dallas and Seattle, and Downtown Atlanta (JLL).



Housing



There are 121,200 housing units in the County, 72% of which are multi-family units.

Households

Since 1980, the majority of Arlington households consist of a single person or nonrelated individuals.



Multi-Modal Transportation



Arlington has 11 Metrorail stations and 16 ART Bus routes that operate throughout the County.

In 2022, Metrorail weekday boardings in May were two times higher than the previous year, but still lower than pre-pandemic levels.

Students



The diverse student body of Arlington Public Schools hail from 149 countries.

Employment



In 2022, Arlington's unemployment rate decreased by 1%, from 3.1% to 2.1%.

Parks

99% of residents live within a 10-minute walk to a park.



Land Use & Development

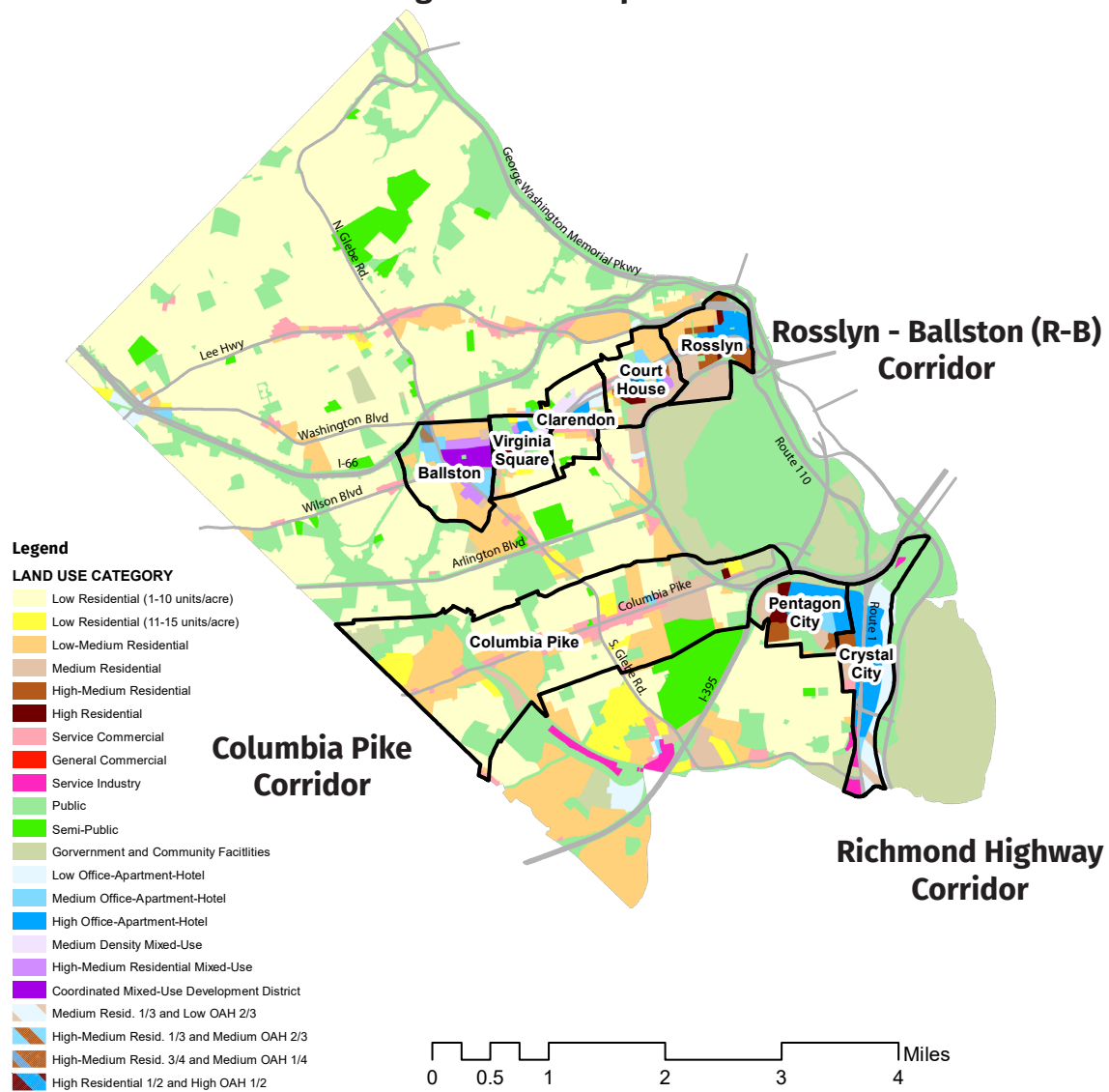
General Land Use Plan

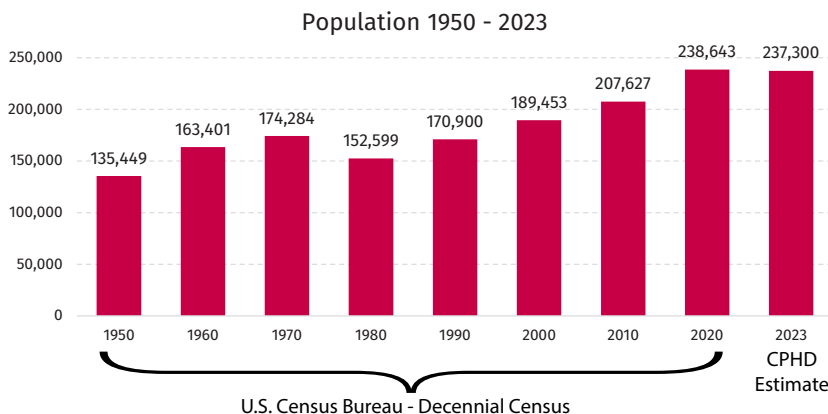
Arlington County's General Land Use Plan (GLUP) is the primary policy guide for future development in the County. The GLUP was first adopted by the County Board in 1961 as one of the first four elements of the County's Comprehensive Plan. Amended over time, the GLUP reflects the County's smart growth principles, concentrating future development along its transit corridors to increase the benefits of its multi-modal transportation options and existing infrastructure. The GLUP also endeavors to balance Arlington's range of land uses with its cultural and natural resources. Through its commitment to careful and thoughtful community planning, along with its adherence to its established policies, Arlington is recognized as a world-class community.

National Planning Achievement Award 2017

-American Planning Association

General Land Use Plan and Planning Corridors Map





Arlington's population slightly declined in 2021 due to impacts from the COVID-19 pandemic. Since 2021, the population has increased by about 1% each year, bringing the 2023 population to 237,300.

2023 Population Estimate	237,300
2023 Daytime Population Estimate	301,700
2020 Decennial Census Population	238,643

Land Area	26 square miles (16,640 acres)
Density	9,123 persons/sq. mile 14 persons/acres

Age Distribution	January 2023	
Under 5	12,250	5.2%
5-19	34,670	14.6%
20-24	15,880	6.7%
25-34	53,030	22.3%
35-44	39,180	16.5%
45-54	30,690	12.9%
55-64	24,090	10.2%
65-84	24,480	10.3%
85 and over	3,020	1.3%

Source: Arlington County, CPHD

Race and Ethnicity	2020 Census	
Not Hispanic or Latino	201,281	84.3%
White	139,653	58.5%
Black or African American	20,330	8.5%
American Indian or Alaska Native	258	0.1%
Asian	27,235	11.4%
Native Hawaiian or Other Pacific Islander	118	0.05%
Some Other Race	1,491	0.6%
Two or More Races	12,196	5.1%
Hispanic or Latino	37,362	15.7%
Total Population	238,643	100.0%

Median Age (2021 ACS 5-Year)	35.1 Years
-------------------------------------	-------------------

Source: 2017-2021 American Community Survey 5-Year Estimates

Source: 2020 Census

Place of Birth	2021 ACS 5-Year	
Native (U.S. Born)	77.5%	
Foreign Born	22.5%	

Migration	2020 ACS
Moved In	46,660
Domestic	41,623
From Abroad	5,037
Moved Out (Domestic Only)	32,355

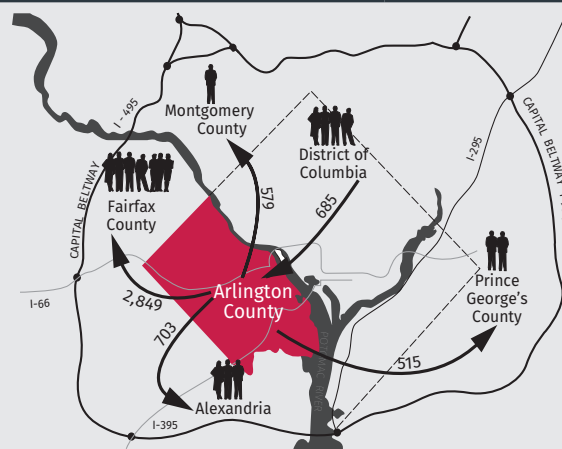
Source: 2017-2021 American Community Survey 5-Year Estimates

Civilian Veteran Population	2021 ACS 5-Year	
Male	10,506	84.1%
Female	1,985	15.9%
Total Veterans	12,491	100.0%

Source: 2017-2021 American Community Survey 5-Year Estimates

Vital Statistics	2021
Births to Arlington Residents	2,451
Deaths of Arlington Residents	933

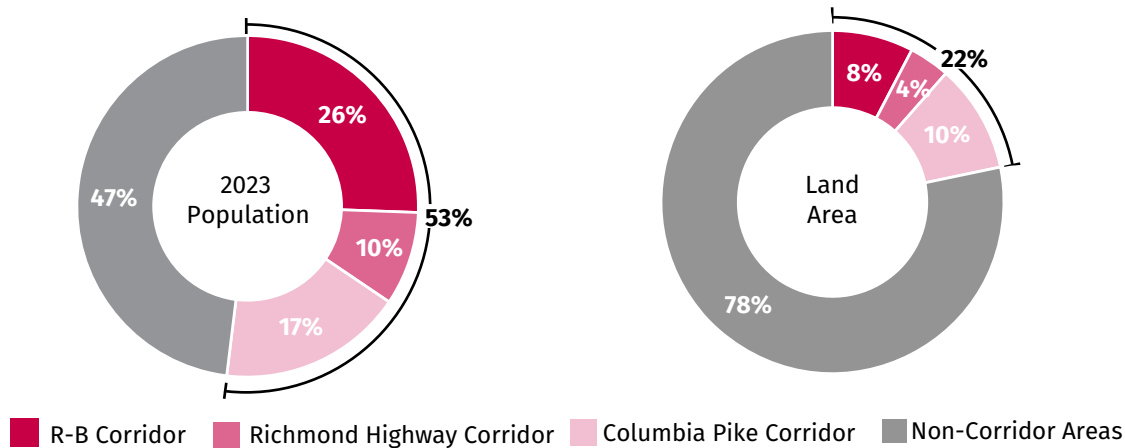
Source: VA Department of Health



Source: 2016-2020 American Community Survey 5-Year Estimates

53% of Arlington's residents live in planning corridors.

2023 Population and Land Area



Source: Arlington County, CPHD

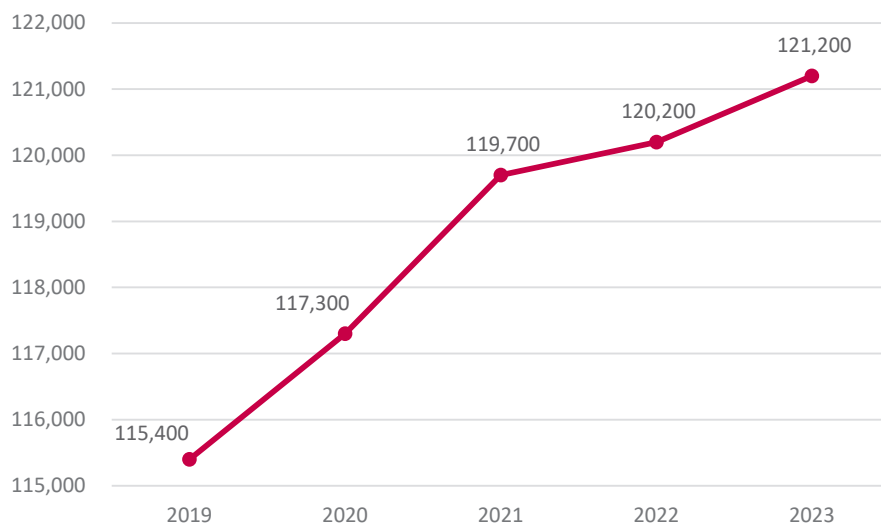
The planning corridors combined have a population density of 34 persons per acre, 4 times greater than non-corridor areas of 9 persons per acre.

Density and Age by Corridor

	R-B Corridor	Richmond Highway Corridor	Columbia Pike Corridor	
DENSITY	Total Population	61,000	24,600	39,400
	Land Area (Acres)	1,277	667	1,690
	Percent of Land Area	8%	4%	10%
	Density (Person Per Acre)	48	37	23
AGE DISTRIBUTION	Under 5 years	3.5%	2.6%	8.6%
	5 to 19 years	6.4%	4.3%	14.5%
	20 to 24 years	11.9%	10.1%	4.8%
	25 to 34 years	35.9%	34.5%	22.9%
	35 to 44 years	16.8%	20.7%	17.3%
	45 to 54 years	8.9%	11.9%	12.6%
	55 to 64 years	7.9%	7.4%	9.4%
	65 to 84 years	7.6%	7.6%	8.8%
	85 years and older	1.1%	1.0%	1.1%

Source: Arlington County, CPHD and 2017-2021 American Community Survey 5-Year Estimates

Total Units 2019-2023



5,800 housing units have been added over the last 5 years, a 1% increase on average each year.

2023 Housing Unit Estimate **121,200**
Housing Growth (2020-2023) **1.8%**

2020 Decennial Census Housing Units **119,085**

Housing Unit Type	January 2023	
Single Family Detached	27,550	22.7%
Single Family Attached	7,050	5.8%
Multi-Family	86,600	71.5%
Total	121,200	100.0%

Source: Arlington County, CPHD

Note: Housing unit type has been updated to reflect 2020 Decennial Census Data.

Occupied Units (2023)	Owner	Renter
Single Family Detached	86.6%	13.4%
Single Family Attached	70.8%	29.2%
Condo	66.9%	33.1%
Apartments	0.0%	100.0%
Total	38.3%	61.7%

Source: Arlington County, CPHD

Average Assessed Value	2023
Single Family Detached	\$1,133,000
Single Family Attached, Townhouse	\$813,800
Condominium Townhouse	\$763,700
Condos	\$460,800
Cooperatives	\$151,400
Total Average Assessment 2023	\$798,500
Total Average Assessment 2022	\$749,030
Percent change (2022-2023)	3.5%

Source: Arlington County, Department of Management and Finance as of January 1, 2023.

Average Apartment Rent	2022
Efficiency	\$1,804
One-Bedroom	\$2,051
Two-Bedroom	\$2,614
Three-Bedroom	\$3,435
Total Average Rent	\$2,290
Percent change (2020-2021)	3.4%
Apartment Vacancy Rate	5.4%

Source: CoStar January 2023

Rent Subsidy Program Recipients	Housing Choice Voucher	Housing Grant
Low-Income Families	671	411
Persons with Disabilities	251	626
Older Adults	559	460
Total	1,481	1,497

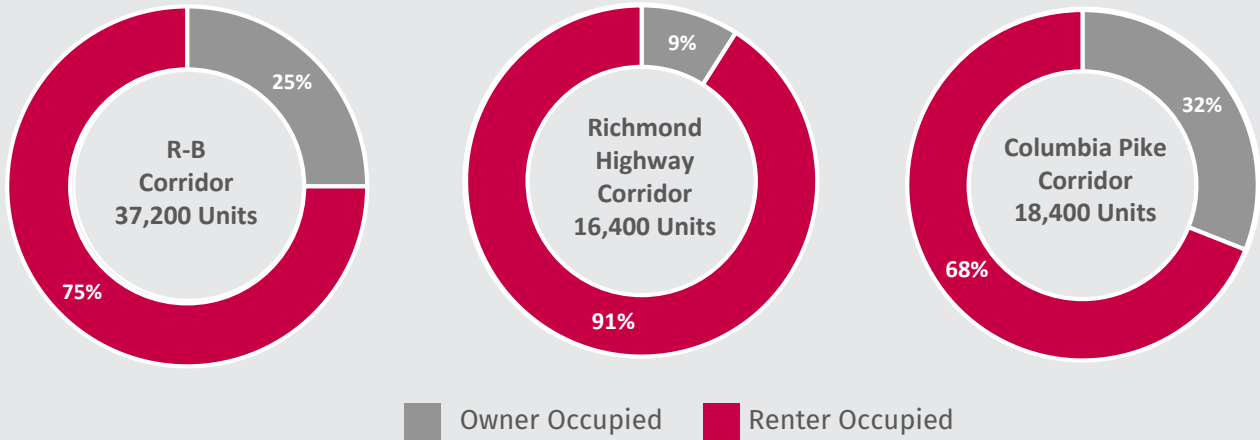
Source: FY 2023 DHS Performance Measures

Committed Affordable Units	2023
Efficiency	860
One-Bedroom	4,998
Two-Bedroom	4,404
Three or More Bedrooms	907
Total	11,169

Source: Arlington County, CPHD, Housing Division

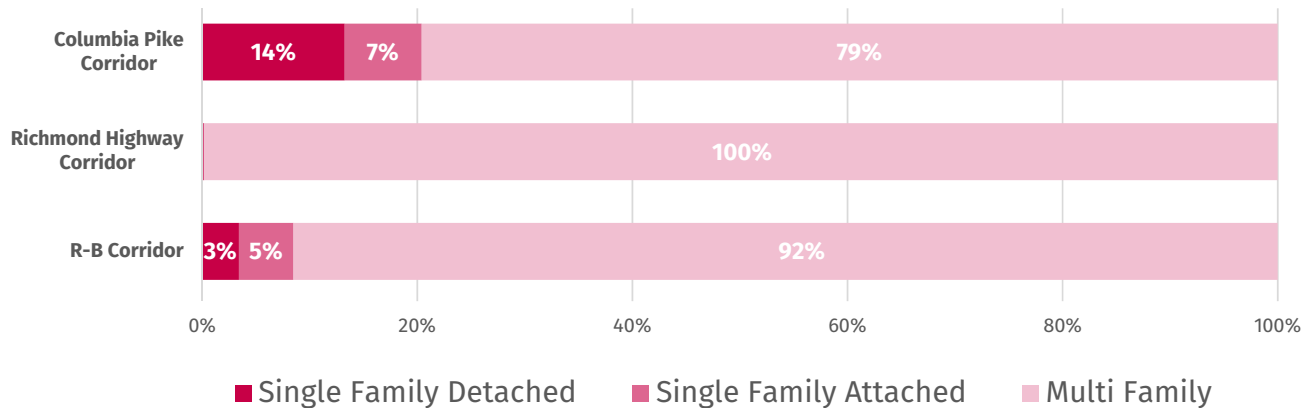
70% of Committed Affordable Units are in the planning corridors.

Owner and Renter Occupancy by Corridor



Source: Arlington County, CPHD

Housing Unit Type By Corridor



Source: Arlington County, CPHD

Committed Affordable Units (CAFs) By Bedroom Type by Corridor (2023)

	R-B Corridor	Richmond Highway Corridor	Columbia Pike Corridor
Efficiency	95	262	254
One-Bedroom	1,257	643	1,646
Two-Bedroom	986	218	1,899
Three-Bedroom	299	18	293
Four-Bedroom	3	-	1
Total	2,640	1,141	4,093

Source: Arlington County, CPHD, Housing Division. For more information on CAF units: <https://www.arlingtonva.us/Government/Programs/Housing/Get-Help/Rental-Services/Affordable-Units>

2023 Households Estimate	114,300
Average Household Size (2021 ACS)	2.12
Average Family Size (2021 ACS)	2.97

2020 Decennial Census Households	109,912
Average Household Size (2020 Census)*	2.14

*Preliminary and subject to change upon the release of the detailed demographic and housing characteristics files to be released by the U.S. Census Bureau in 2023.

Household Size	2021	
1-Person	43,641	39.8%
2-Person	36,902	33.7%
3-Person	12,844	11.7%
4-Person	10,912	10.0%
5+ Persons	5,229	4.8%
Total	109,528	100.0%

Source: 2017-2021 American Community Survey 5-Year Estimates

Household Type	2021	
Family-Households	49,969	45.6%
Non-Family Households	59,559	54.4%
Total	109,528	100.0%

Source: 2017-2021 American Community Survey 5-Year Estimates

Household Type with Children under 18-Years	2021	
Households with Children	22,750	20.8%
Family Households	22,642	20.7%
Married Couple	18,146	16.6%
Male Householder, no female	1,402	1.3%
Female Householder, no male	3,094	2.8%
Non-Family Households	108	0.1%
Households without Children	86,778	79.2%
Total	109,528	100.0%

Source: 2017-2021 American Community Survey 5-Year Estimates

Income	2021
Median Household Income (ACS)	\$128,145
Per Capita Income (BEA)	\$107,603

Source: 2017-2021 American Community Survey 5-Year Estimates and Bureau of Economic Analysis

Area Median Income (AMI)	FY 2022
Washington Metro Area (Family of Four)	\$142,300

Source: HUD FY 2022 Income Limits

Household Language	2021	
English Only Household	75,793	69.2%
Proficient in English and Another Language	28,499	26.0%
Limited English Proficient Households	5,236	4.8%
Spanish	2,213	2.0%
Asian or Pacific Island	1,634	1.5%
Other Indo-European	834	0.8%
Other Languages	555	0.5%
Total	109,528	100.0%

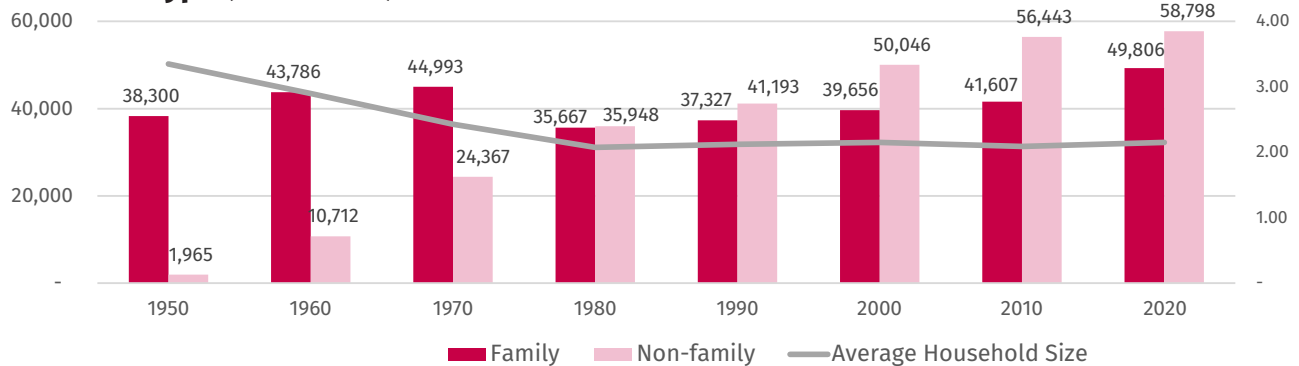
Source: 2017-2021 American Community Survey 5-Year Estimates

Household Poverty Status	2021
Below Poverty Level	6.3%
Above Poverty Level	93.7%

Source: 2017-2021 American Community Survey 5-Year Estimates

Since 1980, the majority of households consist of a single person or nonrelated individuals.

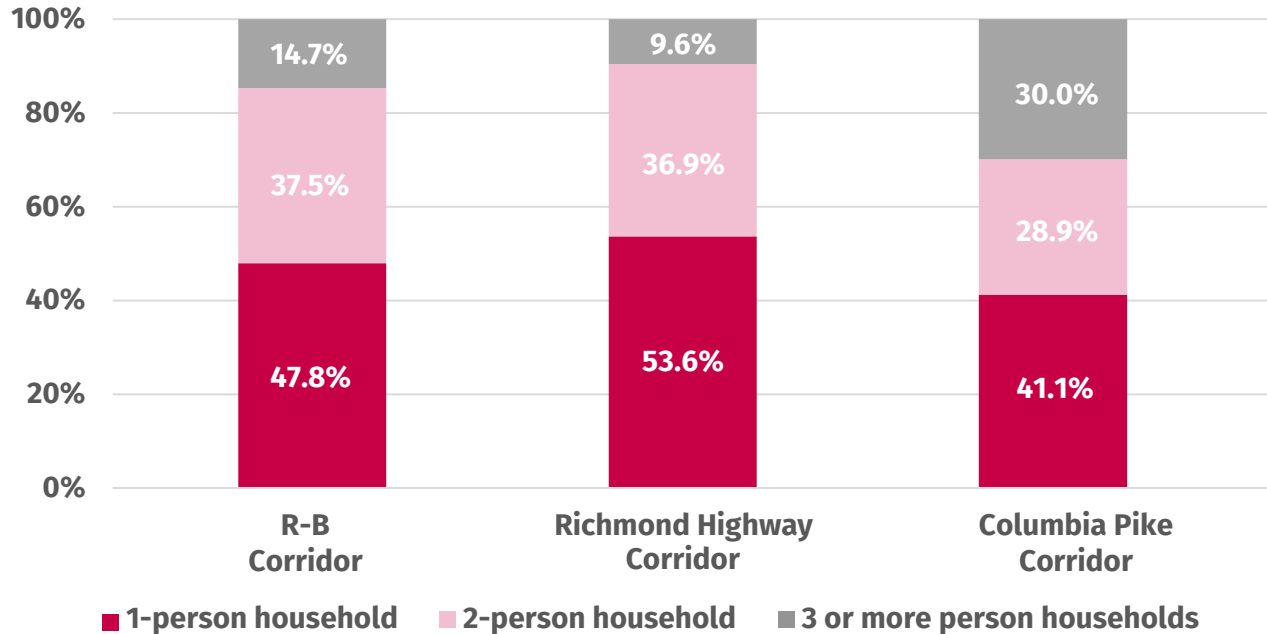
Household Type (1950-2020)



Source: Decennial Census 1950-2010 and 2017-2021 American Community Survey 5-Year Estimates

81% of households in the planning corridors are one or two person, compared to 62% outside of the planning corridors.

Household Size by Planning Corridor



Source: 2017-2021 American Community Survey 5-Year Estimates

Household Characteristics by Planning Corridor

	R-B Corridor	Richmond Highway Corridor	Columbia Pike Corridor
TYPE			
Total Households (2023)	34,700	15,300	17,300
Average Household Size	1.74	1.60	2.26
Family Households	30.0%	27.2%	48.3%
Non-Family Households	70.0%	72.8%	51.7%
HOUSEHOLD SIZE			
1-Person	47.8%	53.6%	41.1%
2-Person	37.5%	36.9%	28.9%
3-Person	7.7%	6.7%	12.4%
4-Person	4.7%	2.2%	10.8%
5+Persons	2.3%	0.7%	6.7%
HOUSEHOLD INCOME			
Less than \$25,000	8.0%	9.4%	12.1%
\$25,000 - \$49,999	6.3%	7.9%	14.4%
\$50,000 - \$74,999	11.1%	12.7%	13.5%
\$75,000 - \$99,999	12.6%	11.8%	15.0%
\$100,000 - \$149,999	20.8%	23.9%	18.1%
\$150,000 or more	41.1%	34.5%	26.8%

Source: Arlington County, CPHD and 2017-2021 American Community Survey 5-Year Estimates

2023 Employment Estimate	214,600
Wage and Salary Jobs	207,800
Self-Employed Jobs	6,800

Resident Civilian Labor Force	153,172
Unemployment Rate	2.1%
Residents Living and Working in Arlington	47,610

At-Place Jobs by Industry		2023
Professional and Technical Services	59,300	27.6%
Other Services	45,800	21.3%
Government	44,600	20.8%
Transportation and Warehousing	11,300	5.3%
Hospitality and Food Services	11,000	5.1%
Retail Trade	9,500	4.4%
Real Estate and Rental/Leasing	8,300	3.9%
All Other	8,100	3.8%
Information	6,400	3.0%
Finance Insurance	6,200	2.9%
Construction	4,100	1.9%
Total Jobs	214,600	100.0%

Source: Arlington County, CPHD

Top Private Employers

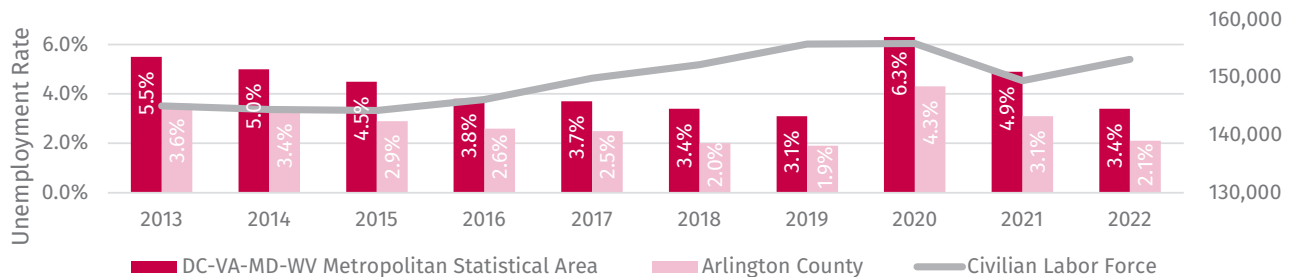
(Listed in Alphabetical Order)

- Accenture - Business Services
- Amazon - Electronic Shopping
- Bloomberg BNA - Legal, Tax and Business News
- Booz Allen Hamilton - Business Services
- Deloitte - Business Services
- Gartner - Business Services
- Grant Thornton - Business Services
- Lidl - Grocery Stores
- Nestle - Durable Goods
- Virginia Hospital Center - Medical Services

Source: Arlington Economic Development

Unemployment Rate and Civilian Labor Force 2013-2022 (Arlington Residents)

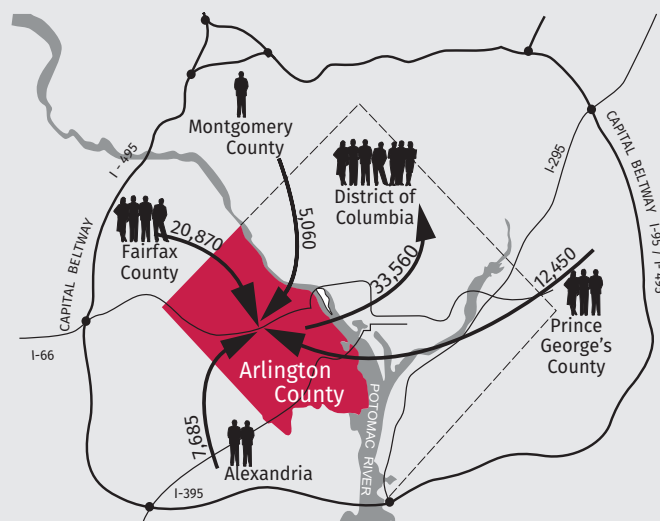
Source: U.S. Bureau of Labor Statistics Local Area Unemployment Statistics (LAUS)



Workforce Flow 2012-2016

	Residents' Work Location	Workers' Home Location
Virginia	83,904	134,166
Arlington County	47,610	47,610
City of Alexandria	5,525	13,210
Fairfax County	25,675	46,545
Prince William County	830	12,545
Loudoun County	965	4,785
Other VA Jurisdictions	3,299	9,471
Maryland	8,590	33,993
Montgomery County	4,985	10,045
Prince George's	2,225	14,675
Other MD Jurisdictions	1,380	9,273
District of Columbia	49,760	16,200
Other States	850	3,036

Net Journey to Work Flow



Source: American Association of State Highway and Transportation Officials, Census Transportation Planning Package 2012-2016 Estimates (Lastest Data Available).

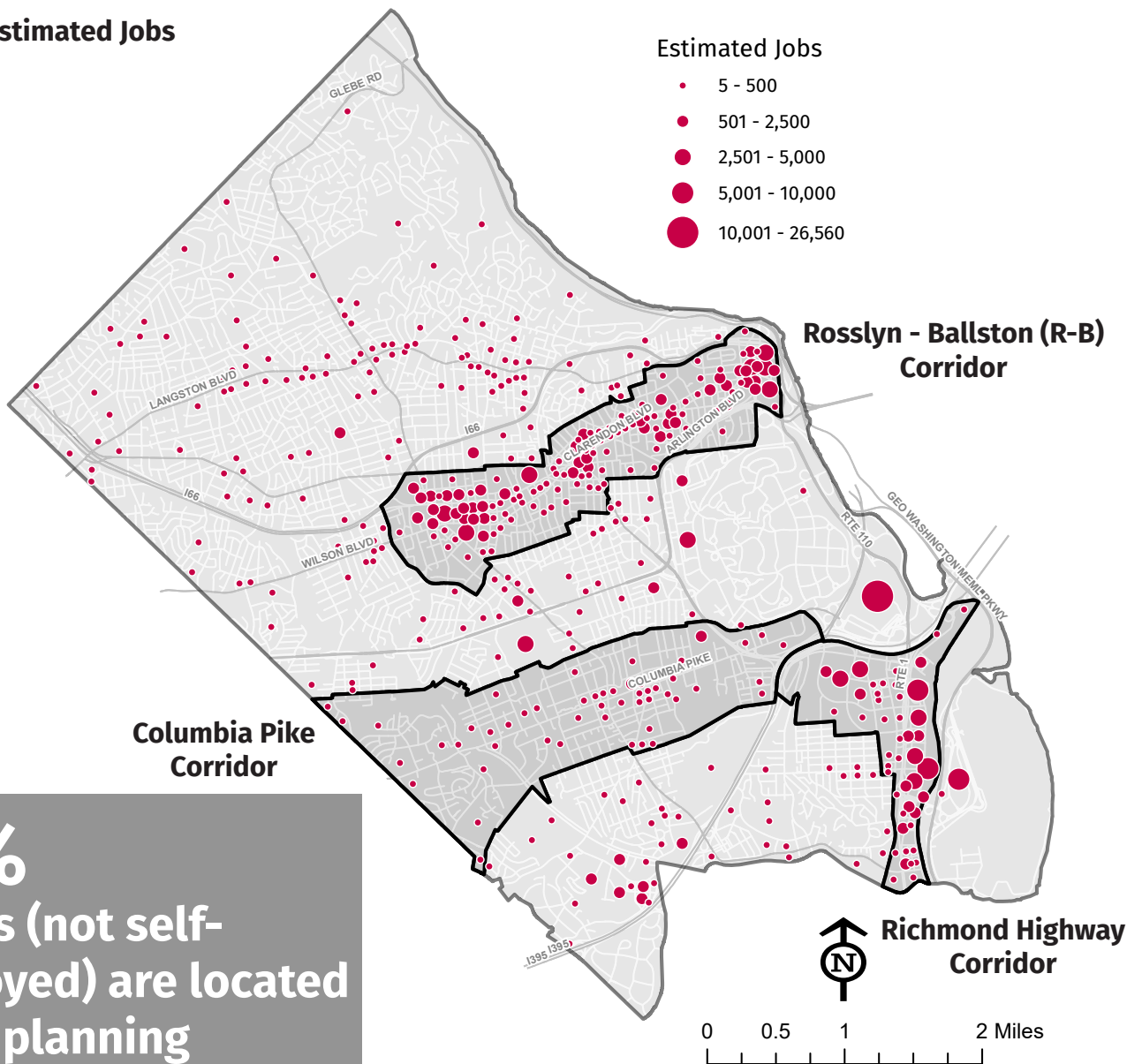
2023 Wage and Salary Jobs by Corridor

	R-B Corridor	Richmond Highway Corridor*	Columbia Pike Corridor
Total Jobs	88,000	45,100	7,000
Office	86.5%	79.4%	47.7%
Retail	9.8%	18.1%	31.7%
Other	3.4%	0.8%	19.4%
Industrial	0.4%	1.7%	1.2%

* Richmond Highway Total Jobs and Job Types do not include jobs located at the Pentagon and National Airport. An estimated 26,560 and 7,906 jobs are located at the Pentagon and National Airport, respectively.

Source: Arlington County, CPHD

2023 Estimated Jobs



67%
of jobs (not self-employed) are located in the planning corridors.

Source: Arlington County, CPHD

2022 Development Activity

	Office GFA	Retail GFA	Other GFA	Residential Units	Hotel Rooms***
Approvals*	3,158,529	191,677	43,261	1,625	-
Construction Starts**	195,281	199,496	192,398	3,399	375
Completions**	-	40,519	364,862	1,122	-
Demolitions**	174,887	18,472	154,127	248	-

GFA = Gross Floor Area

Source: Arlington County, CPHD

*Include projects requiring County Board approval, e.g. site plans and use permit developments (including form based code).

**Include all projects, e.g. site plans, form based code, and by-right.

***Includes temporary conversion of residential unit to hotel room for up to 24 months.

Estimated Total Rentable Building Area (RBA) 41,908,023 Office Vacancy Rate (2022) 22.1%

Source: CoStar, AED

Current Office GFA by Decade Constructed

	R-B Corridor	Richmond Highway Corridor	Columbia Pike Corridor
1920-1929	6,687	-	2,190
1930-1939	6,830	1,818	-
1940-1949	56,602	-	290,308
1950-1959	87,187	-	3,352
1960-1969	3,523,938	1,548,305	137,688
1970-1979	948,451	3,097,547	401,147
1980-1989	8,280,805	5,830,556	-
1990-1999	3,091,239	438,928	21,964
2000-2009	5,217,275	652,611	14,650
2010-2019	2,938,421	721,423	-
2020-Current	191,300	10,000	-
Total GFA	24,348,735	12,301,198	871,299

Source: Arlington County, CPHD

Current Residential Units by Decade Constructed

	R-B Corridor	Richmond Highway Corridor	Columbia Pike Corridor
Pre-1960	12.5%	4.1%	45.3%
1960-1969	4.6%	24.0%	26.9%
1970-1979	1.9%	10.7%	5.6%
1980-1989	16.9%	10.9%	5.2%
1990-1999	16.8%	4.1%	0.7%
2000-2009	23.8%	23.0%	4.9%
2010-2019	15.5%	17.1%	8.9%
2020-Current	7.9%	6.1%	2.5%
Total Units	37,200	16,400	18,400

Source: Arlington County, CPHD

Property Tax Base (2022)

Commercial	45%
Residential	55%

Source: Arlington County, Real Estate Assessments

Note: Apartment buildings are included in the commercial tax base but are taxed at the general rate.

Major Retail Facilities

Gross Leasable Area (SF)

Fashion Centre at Pentagon City	1,037,175
Shops at 1750 Crystal Drive	56,965
Shops at 2100 Crystal Drive	53,174
Ballston Quarter	310,704
Pentagon Centre	337,717
The Crossing Clarendon	419,950
Westpost at National Landing	296,468
Village at Shirlington	201,803
Lee Harrison Shopping Center	118,775

Source: CoStar, Arlington Economic Development

Taxable Sales

Total Taxable Sales (2022) \$3.24 Billion

Source: Virginia Department of Taxation

Hotels and Motels

Number of Hotels/Motels	38
Number of Rooms	9,556
Square Feet of Meeting Space	290,717

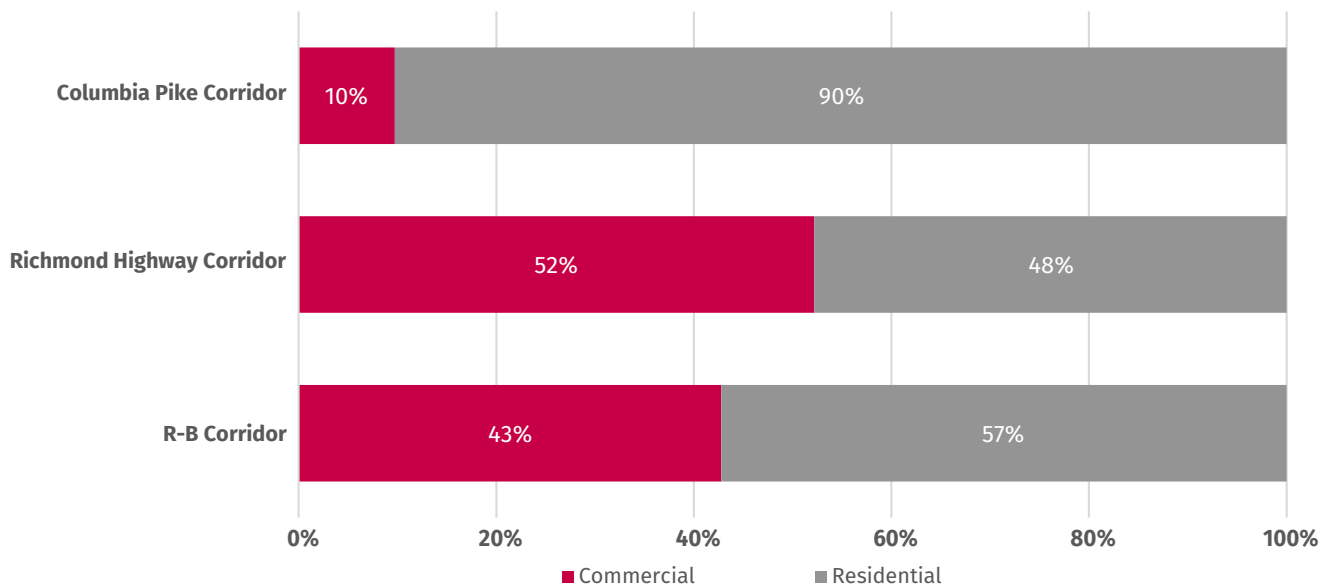
Source: Arlington Convention and Visitors Service

2022 Development Activity by Corridor

		Office GFA	Retail GFA	Residential Units	Hotel Rooms
R-B Corridor	Complete	24,348,735	3,532,043	37,200	3,705
	Under Construction	178,131	125,172	2,098	375
	Approved	3,019,444	234,323	4,484	733
Richmond Highway Corridor	Complete	12,301,198	3,041,039	16,400	5,648
	Under Construction	2,082,566	136,410	1,064	-
	Approved	4,791,265	488,364	2,553	200
Columbia Pike Corridor	Complete	871,299	891,882	18,400	645
	Under Construction	-	23,000	361	-
	Approved	-	63,240	755	-

Source: CPHD, Development Tracking, December 31, 2022

Commercial and Residential Use Mix By Corridor



Estimated Commercial and Residential GFA by Corridor

Use Mix	R-B Corridor	Richmond Highway Corridor	Columbia Pike Corridor
Commercial GFA	30,566,903	19,458,476	2,230,806
Residential GFA	41,026,700	18,296,300	20,644,800

Commercial GFA includes office, retail, and hotel GFA. Hotel GFA is estimated based the ratio of 725 GFA per 1 hotel room. Residential GFA is estimated based on the ratio of 1,100 GFA per 1 residential unit.

Source: CPHD, Development Tracking, December 31, 2022.

Languages Spoken by APS Students 88
Countries of Origin of APS Students 149

FY 2023 Expenditures Per Pupil \$23,521
Class of 2022 On-Time Graduation Rate 92%

Source: Arlington Public Schools, September 30, 2022 and <https://www.apsva.us/wp-content/uploads/2023/02/FY-2023-WABE-Guide.pdf>

APS Enrollment	September 30, 2022
Elementary School (PreK-5)	13,499
Middle School	5,810
High School	8,146
Total Student Enrolled in APS	27,455

Source: Arlington Public Schools, September 30, 2022, <https://www.apsva.us/statistics/monthly-enrollment/>

Students Per Classroom Teacher	FY 2023
Elementary School (PreK-5)	21.7
Middle School	19.1
High School	19.6

Source: FY 2023 The Washington Area Boards of Education Guide

School Type for Population 3+ Years Enrolled in School	Public	Private
Nursery school or preschool	36.1%	63.9%
Kindergarten	78.3%	21.7%
Grade 1 to grade 4	87.9%	12.1%
Grade 5 to grade 8	86.7%	13.3%
Grade 9 to grade 12	88.7%	11.3%
College undergraduate years	64.2%	35.8%
Graduate or professional school	41.2%	58.8%

Source: 2017-2021 American Community Survey 5-Year Estimates

Educational Attainment	2021 ACS	
Less than High School Graduate	8,860	5.1%
High School Graduate	12,874	7.4%
Some College	13,549	7.8%
Associates Degree	5,824	3.4%
Bachelor's Degree	61,200	35.3%
Graduate or Professional Degree	71,170	41.0%
Total Age 25 Years and Older	173,477	100.0%

Source: 2017-2021 American Community Survey 5-Year Estimates

76%

Nationwide, Arlington tops the list of counties with the highest percentage of residents with a bachelor's degree or higher.

APS County-Wide Student Generation Factor by Housing Type	Fall 2022
Single Family Detached	0.471
Single Family Detached with Accessory Dwelling	0.475
Townhouse	0.209
Duplex	0.317
Apartments Elevator - Market Rate	0.062
Apartments Elevator - Mixed Income	0.120
Apartments Elevator - Committed Affordable	0.601
Apartments Garden - Market Rate	0.218
Apartments Garden - Mixed Income	0.325
Apartments Garden - Committed Affordable	0.579
Condo Elevator	0.054
Condo Garden	0.114
Total	0.219

Source: Fall 2022, 10-Year Enrollment Projections Report, Attachment C, <https://www.apsva.us/statistics/enrollment-projections/>

Child Care	FY 2022
Child Care Slots	7,887
Center Based Slots	5,103
Religious-Affiliated Program Slots	909
Public Schools Slots	1,079
Family Based Slots	796

Source: Arlington County, Department of Human Services

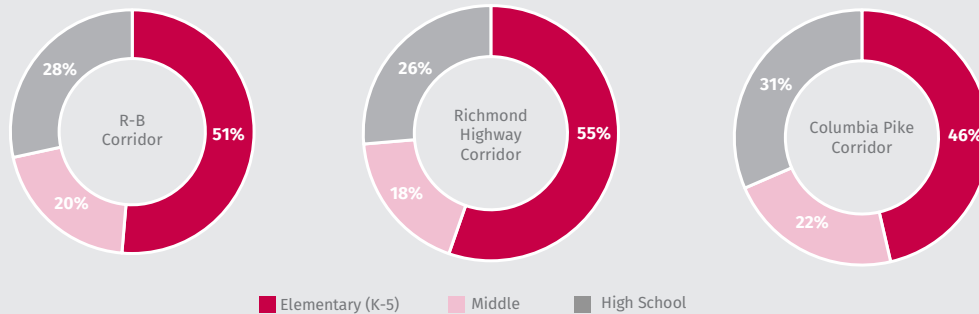
Graduate Programs, Colleges, and Universities in Arlington (2022)

DeVry University (139) | George Mason University | George Washington University (255) | Marymount University (3,555) | Strayer University (3,223) | University of Management and Technology (1,309) | University of Virginia | Virginia Tech (260)

Enrollment numbers provided when available from school/university or National Center for Education Statistics (2022).

24% of APS students K-12 live in the Columbia Pike Corridor, the most in the planning corridors.

APS Student Grade Level Distribution in Planning Corridors



		R-B Corridor	Richmond Highway Corridor	Columbia Pike Corridor
APS TOTALS	Total APS Students	3,061	721	6,388
	Elementary (K-5)	1,572	399	2,963
	Middle	620	132	1,413
	High School	869	190	2,012

Source: 1. Students data from APS September 30, 2022 count.
2. Corridor boundaries from Arlington County ARLGIS.PlanningCorridor_polys 2020 shapefile

Note: Some students were not geocoded for reasons such as (i) they are children of employees who live outside Arlington County, (ii) they reside on Joint Base Myer-Henderson Hall (federal jurisdiction), or (iii) they are experiencing homelessness, are in foster care outside of Arlington County, or live in a shelter.

75% of residents in the Planning Corridors Age 25 and Over have a Bachelor's Degree or Higher.

Educational Attainment of Corridor Residents (Age 25 Years and Over)

		R-B Corridor	Richmond Highway Corridor	Columbia Pike Corridor
EDUCATIONAL ATTAINMENT	Population Age 25+	42,722	17,681	30,159
	Less than High School Graduate	3.5%	0.7%	11.7%
	HS Diploma or GED	4.1%	3.9%	14.3%
	Some College	5.5%	6.3%	11.1%
	Associates Degree	2.2%	3.7%	5.0%
	Bachelor's Degree	39.9%	40.6%	31.7%
	Graduate or Professional Degree	44.7%	44.8%	26.1%

Source: 2017-2021 American Community Survey 5-Year Estimates



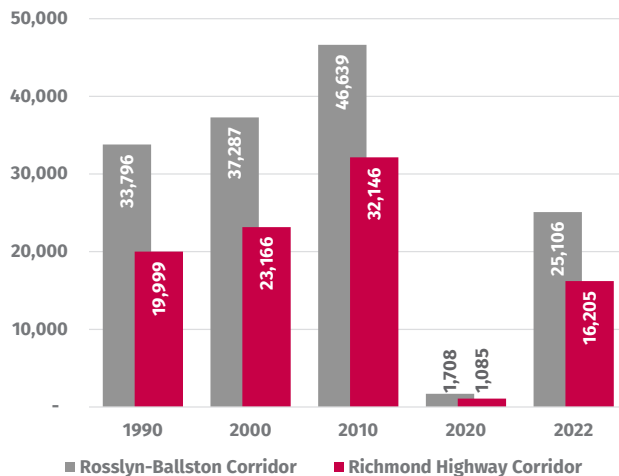
Air travel out of Ronald Reagan Washington National Airport has reached and surpassed pre-pandemic numbers.

Metrorail

2022 Average Weekday Activity	Entry	Exits
Rosslyn-Ballston	13,204	13,062
Rosslyn	4,501	4,311
Courthouse	2,200	2,230
Clarendon	1,722	1,827
Virginia Square	1,312	1,269
Ballston	3,469	3,425
Richmond Highway Corridor	7,959	8,012
Pentagon City	4,299	4,393
Crystal City	3,660	3,619
Non-Corridor Stations	10,591	10,028
East Falls Church	1,564	1,602
Arlington Cemetery	731	717
Pentagon	4,629	4,405
Reagan National Airport	3,666	3,305

Source: Washington Metropolitan Area Transit Authority

Metrorail Weekday Boardings (May 1990-2022)



Source: Washington Metropolitan Area Transit Authority

*Post 2020 ridership reflects impacts due to COVID-19 and increased telework during the pandemic

ART- Arlington Transit (FY 2022)

Passenger Trips	1,772,824
Total Passenger Miles	3,722,928
Bus Routes	16

Source: DES Transit Bureau, January 19, 2023

Capital Bikeshare (2022)

Total Mileage	555,912
Total Trips	234,881
Arlington Stations	109

Source: DES Commuter Services Bureau, Capital Bikeshare Program, January 19, 2023

Scooters (2022)

Total Ride Miles	453,637
Total Trips	441,654

Source: DES Commuter Services Bureau, January 23, 2023

Other Shared E-Bikes (2022)

Total Ride Miles	72,107
Total Trips	53,663

Source: DES Commuter Services Bureau, January 23, 2023

Bicycle & Pedestrian Counts (2022)

Bicycle and Pedestrian

Custis Trail - West of Rosslyn	435,510
Key Bridge - Rosslyn to DC	1,259,841
Mt. Vernon Trail - Near Airport	521,341
W&OD Trail - Bon Air Park	576,434

Bicycle Only:

Clarendon Boulevard	N/A for 2022
Wilson Boulevard	54,216

Source: DES Transportation Planning, January 31, 2023

Air Travel Passengers (2022)

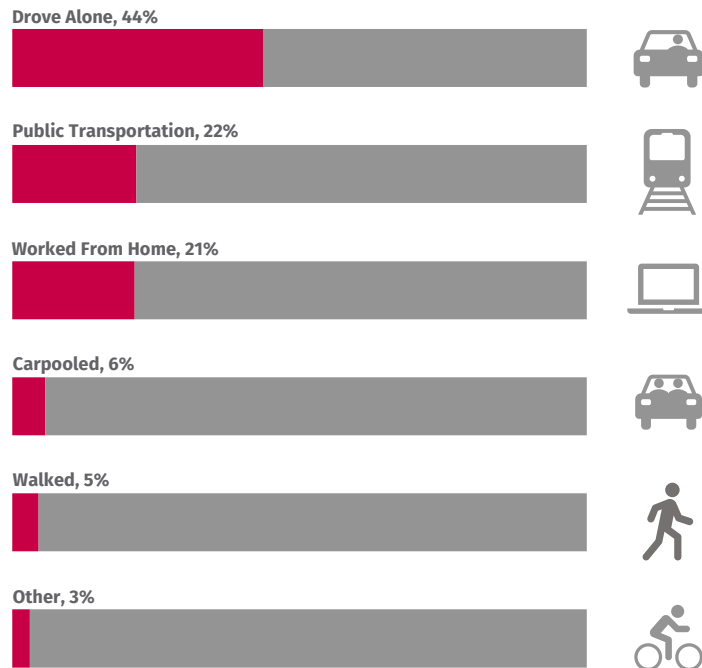
Ronald Reagan Washington National Airport	23,961,442
Washington Dulles International Airport	21,376,896
Baltimore/Washington International Thurgood Marshall Airport	22,724,747

Source: Metropolitan Washington Airports Authority and Baltimore-Washington International Airport

Multi-Modal Transportation

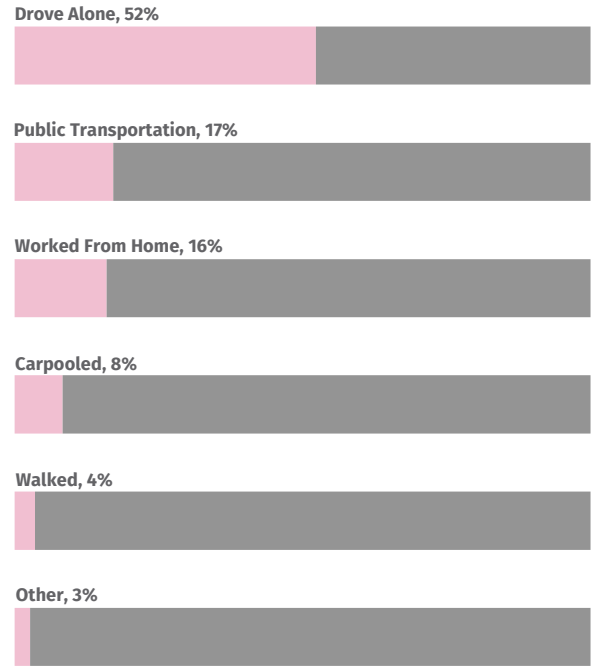
Mode of Transportation to Work

Arlington Residents



■ Live in Arlington

Arlington Workers



■ Work in Arlington

Source: 2017-2021 American Community Survey 5-Year Estimates

21% of workers age 16 and over living in Arlington work from home, a 7% increase from last year.

Number of Vehicles Available Per Household

	Number of Households	Percent
No Vehicles Available	15,129	13.8%
1 Vehicle Available	52,451	47.9%
2 Vehicles Available	32,458	29.6%
3 or More Vehicles Available	9,490	8.7%
Total Households	109,528	100.0%

Source: 2017-2021 American Community Survey 5-Year Estimates

County Owned Parkland* **924 acres (148 parks)**
NOVA Parks **136 acres (3 parks)**

Facilities	No.
Libraries	8
Fire Stations	9
Community Centers	13
55+ Centers	5
Multi-Use Trails (Off-Street)*	51 miles
Bicycle Facilities**	102 miles

Source: Arlington County: Department of Parks and Recreation, Libraries, Fire Department, Department of Environmental Services.

Park and Recreational Facilities	No.
County Owned Parks	148
Playgrounds*	127
Spraygrounds	6
Amphitheaters*	6
Indoor or Outdoor Public Pools*	4
Nature Centers*	3
Reservable Picnic Shelters	16

Source: Arlington County, Department of Parks and Recreation

Other Park Amenities	No.
Community Gardens*	7
Off Leash Dog Parks	10
Outdoor Tracks*	3
Skateboard Park	1

Source: Arlington County, Department of Parks and Recreation

Other Community Resources	No.
Theaters	5
Places of Worship	83
Restaurants	618
Hospitals	1
Farmers Markets	10

Source: Arlington County, CPHD and AED

Local Historic Districts	2022
Total Districts	42
Oldest Building	Ball-Sellers House (1760)
Newest Building	Stratford School (1950)

Note: Anderson House Local Historic District was added in 2022

Source: Arlington County, CPHD, Historic Preservation

*Located on County Owned Parkland, NOVA Parks, Arlington Public Schools, Federal Land, and/or privately owned land with an access easement.

** Refers to bicycle lanes (standard and buffered), protected Bicycle lanes, bicycle boulevards, and recommended on-street routes.

National Park Service **417 acres**
(GW Parkway, Arlington House, and Iwo Jima Memorial)

Athletic and Small Games Courts	No.
Basketball Courts*	93
Full Courts	79
Half Courts	14
Tennis Courts*	91
Full Courts	86
Half Courts	5
Volleyball*	24
Bocce*	3
Handball	2
Petanque	5
Futsal Courts	1
Pickleball Courts	31

Source: Arlington County, Department of Parks and Recreation

Athletic Fields	No.
Diamond*	35
Rectangle*	42
Combination* (Diamond and Rectangle)	19

Source: Arlington County, Department of Parks and Recreation

Libraries	FY 2022
# of Arlington Households Reached	57,000
Number of events	3,200
Program attendees (youth and adult)	79,000
Summer Reading Challenge Participants	8,000
Number of active cardholders	78,000
Number of physical library items circulated	1,124,000
Number of digital library items circulated	972,000
Number of app sessions	680,000
Number of wifi logins (indoor/outdoor)	1,600,000

Source: Arlington County, Department of Libraries

Federal Parkland and Memorials (FY 2022)

- Arlington House
- Arlington National Cemetery
- George Washington Memorial Parkway
- Gravelly Point
- Roaches Run Waterfowl Sanctuary
- National 9/11 Pentagon Memorial
- Air Force Memorial
- US Marine Corps War Memorial (Iwo Jima)

#3 Best Cities for Families

Opendoor, August 2022

Department of Human Services (DHS)

DHS Customer Service Center FY 2022

Walk-in Visits (Main Center)	24,849
Calls Received (Main Call Center)	73,779
Calls to Behavioral Health Emergency Line	34,747
Calls to Child Protective Services Hotline	2,059
Visits to Public Health Clinics	11,902
Visits to Behavioral Health Center	16,233

Human Services Programs Most Frequently Accessed FY 2022 # Assisted

School Health Clinics	17,657
Medicaid	28,597
Behavioral Healthcare	6,417
Supplemental Nutrition Assistance	8,805
Immunization Clinic*	1,518
Housing Assistance	3,405
Family Planning	1,823

*Does not include COVID immunizations

Other FY 2022

Food establishment inspections	2,072
Homeless individuals	182
Children in foster care	49
Nonprofits partnering with DHS	43
Arlington Police Patrol Officers trained in mental health crisis intervention (CIT)	76%

Human Services Divisions and Programs (DHS)

The Department of Human Services administers programs in public health, behavioral health, and social services, including:

Aging and Disability Services

Aging and Disability Resource Center | Senior Nutrition | Adult Protective Services | Medicare Counseling | Senior Behavioral Healthcare | Adult Day Program | Developmental Disabilities Services | Nursing Visits | Area Agency on Aging

Behavioral Healthcare

Crisis Intervention | Residential Care | Day Program | Mental Health and Substance Use Outpatient Treatment | Jail-Based Services | Homeless Outreach | Health and Wellness

Child and Family Services

Children's Behavioral Healthcare | Parent Support | Child Protective Services | Foster Care | Adoption | Child Care Licensing

Economic Independence

Crisis Assistance | Employment Center | Medicaid | SNAP | Homeless Services | Housing Assistance | Community Outreach

Public Health

Immunization Clinic | Maternity Clinic | WIC | Family Planning | Sexually Transmitted Infection Clinic | Environmental Health | Disease Investigation | Dental Clinic | School Health | Tuberculosis Control | COVID Response

Source: Arlington County, Department of Human Services
A comprehensive list of programs can be found at <https://www.arlingtonva.us/Government/Departments/DHS/DHS-Program-Directory>

Parks and Recreation

Program Enrollment FY 2022

Enjoy Arlington Recreation and Fitness Classes	17,810
Youth	14,024
Adult	3,786
Summer Camp 2021	14,639
Teen Nutrition, Fitness & After-school Programs	620
55+ Adult Classes and Fitness Programs	14,563

DPR & Affiliated Leagues Registration FY 2022

Youth	25,596
Adult	3,545

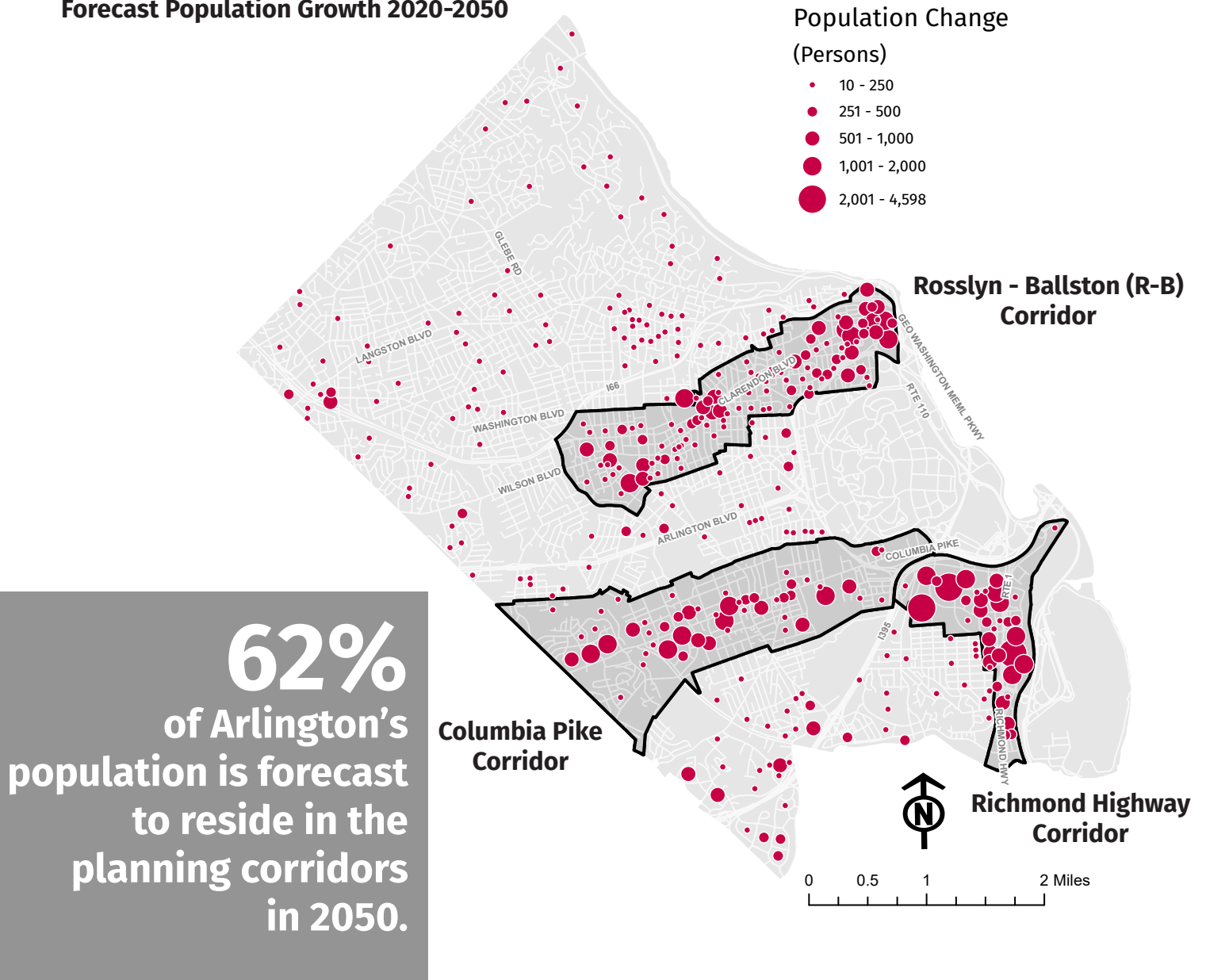
Source: Arlington County, Department of Parks and Recreation

Arlington County Forecast Round 10.0

	Housing Units	Households	Population	Jobs
2020 Census	119,085	109,912	238,643	221,600
2025	126,500	118,200	245,800	223,200
2030	135,200	126,200	260,200	236,700
2035	142,800	133,300	272,900	259,200
2040	150,000	140,000	285,200	266,400
2045	157,400	146,900	298,000	275,300
2050	164,600	153,600	311,200	283,700

*CPHD Estimate

Forecast Population Growth 2020-2050



62%
of Arlington's
population is forecast
to reside in the
planning corridors
in 2050.

About the Forecast

Arlington County participates in the Metropolitan Washington Council of Governments (MWCOC) Cooperative Forecasting program – a joint effort with Federal and local governments of the region to produce a consistent set of long-range economic and demographic forecasts. These forecasts are the basis of functional plans in the areas of transportation, water resources, air quality, housing, land use, and energy. Updates to Arlington County's forecast are generally produced on an annual or 2-year basis. Forecasts are produced for a 30-year period, broken down in to 5-year increments. Each major forecasting process led by MWCOC is called a Round. In August 2022, Arlington County submitted updated forecast numbers for Round 10.0. MWCOC is anticipated to approve Round 10.0 as land use inputs for Transportation Planning Board's Air Quality Conformity Analysis this year.

Arlington County Forecast Round 10.0 by Corridor

	R-B Corridor	Richmond Highway Corridor	Columbia Pike Corridor	Other Areas	
HOUSING UNITS	2020 Census	35,476	15,983	18,401	49,225
	2025	39,300	18,800	18,700	49,700
	2030	42,900	21,900	19,600	50,800
	2035	45,700	24,800	20,600	51,700
	2040	48,300	27,100	21,800	52,800
	2045	50,100	29,800	24,200	53,300
	2050	51,500	32,400	27,100	53,600
	2020-2050 % Change	45.2%	102.7%	47.3%	8.9%
HOUSEHOLDS	2020 Census	31,619	13,989	17,475	46,829
	2025	36,600	17,500	17,400	46,600
	2030	39,900	20,400	18,300	47,600
	2035	42,500	23,100	19,200	48,400
	2040	45,000	25,200	20,300	49,500
	2045	46,600	27,800	22,500	50,000
	2050	48,000	30,200	25,300	50,200
	2020-2050 % Change	51.8%	115.9%	44.8%	7.2%
POPULATION	2020 Census	56,642	22,892	41,054	118,055
	2025	65,400	29,100	39,400	111,900
	2030	71,300	33,900	41,300	113,600
	2035	75,800	38,200	43,700	115,200
	2040	80,000	41,800	46,500	116,900
	2045	83,000	45,900	51,300	117,800
	2050	85,400	49,800	57,700	118,300
	2020-2050 % Change	50.8%	117.5%	40.5%	0.2%
JOBS	2020 Census	91,400	50,600	8,500	71,100
	2025	87,300	54,800	8,400	72,700
	2030	87,100	67,900	8,600	73,100
	2035	86,600	89,800	8,700	74,100
	2040	87,600	95,100	9,400	74,300
	2045	91,400	100,000	9,400	74,500
	2050	93,200	104,400	10,900	75,100
	2020-2050 % Change	2.0%	106.3%	28.2%	5.6%

Source: CPHD (Prepared Fall 2022)

Average Family Size: A measure obtained by dividing the number of members of families by the total number of families or family householders. (U.S. Census Bureau)

Average Household Size: A measure obtained by dividing the number of people in households by the total number of households or householders. (U.S. Census Bureau)

Committed Affordable Units (CAFs): These units are guaranteed by agreement with the federal, state, or County Government, or through mechanisms such as tax-exempt financing, to remain affordable to low and moderate income households for a specified period of time; generally 30 to 60 years. Rents in most cases are affordable to households earning 60% or less of the Area Median Income, although some CAFs have rents affordable to households earning up to 80% of median.

Civilian Labor Force: All civilian population 16 years old and over who are employed: (1) "at work" -- those who did any work at all during the reference week as paid employees, worked in their own business or profession, worked on their own farm, or worked 15 hours or more as unpaid workers on a family farm or in a family business; or (2) were "with a job but not at work" -- those who did not work during the reference week but had jobs or businesses from which they were temporarily absent due to illness, bad weather, industrial dispute, vacation, or other personal reasons. (U.S. Census Bureau)

Educational Attainment: Refers to the highest level of education completed in terms of the highest degree or the highest level of schooling completed. (U.S. Census Bureau)

Employment Industry: A group of establishments that produce similar products or provide similar services. (U.S. Bureau of Labor Statistics)

Family: A householder and one or more people living in the same household who are related to the householder by birth, marriage, or adoption. All people in a household who are related to the householder are regarded as members of his or her family. (U.S. Census Bureau)

Fiscal Year: A one year period beginning July 1 through June 30.

Gross Floor Area: The sum of the area (square feet) within a building. (CPHD)

Households: A household includes all the people who occupy a housing unit as their usual place of residence. (U.S. Census Bureau)

Householder: The person, or one of the people, in whose name the home is owned, being bought, or rented. (U.S. Census Bureau)

Migration: Migration includes all changes of residence including moving into, out of, or within a given area. (U.S. Census Bureau)

Population: All people, male and female, child and adult, living in a given geographic area. (U.S. Census Bureau)

Rentable Building Area (RBA): Expressed in square feet, this area includes the usable area and its associated share of the common areas (CoStar)

Self-Employed Jobs: Those persons who work for profit or fees in their own business, profession, trade, or farm. Only the unincorporated self-employed are included in the self-employed category. (U.S. Bureau of Labor Statistics)

Student Generation Factor (SGF): The ratio between the number of enrolled APS students to housing units. (Arlington Public Schools)

Unemployment Rate: Represents the number of unemployed people as a percentage of the civilian labor force. (U.S. Bureau of Labor Statistics)

Vacancy Rate: Identifies the amount of New/Relet/Sublet space vacant divided by the existing RBA (CoStar)

Wage and Salary Jobs: Workers who receive wages, salaries, commissions, tips, payment in kind, or piece rates. The group includes employees in both the private and public sectors. (U.S. Bureau of Labor Statistics)

Profile 2023 Resources

U.S. Census Bureau (general information) (301) 763-4636
www.census.gov
The U.S. Census Bureau collects and reports demographic and economic data for the nation, states, counties and cities

Arlington County Demographic Data
<https://projects.arlingtonva.us/data-research/>

Arlington Public Schools (703) 228-6000
www.apsva.us
Information on enrollment, schools and programs, data, and PreK – 12 educational services for Arlington County families.

Weldon Cooper Center for Public Service (434) 982-5522
www.coopercenter.org
Data and research on the Commonwealth of Virginia and Virginia counties and cities.

Virginia Employment Commission (804) 786-1485
<http://www.vec.virginia.gov/>
Labor market and employment data for the Commonwealth of Virginia and Virginia counties and cities.

Northern Virginia Regional Commission (703) 642-0700
www.novaregion.org
Information on demographics, transportation, environmental services and human services for Northern Virginia.

Metropolitan Washington Council of Governments (202) 962-3200
www.mwcog.org
Population, housing, transportation, and health and human services information for the Washington DC region.

Arlington County Government Frequently Called Numbers

County Manager's Office (703) 228-3120

County Board Office (703) 228-3130

Department of Community Planning, Housing and Development

Planning Division (703) 228-3525

Zoning Division (703) 228-3883

Inspection Services Division (703) 228-3800

Code Enforcement (703) 228-3232

Housing Division (703) 228-3760

Housing Information Center (703) 228-3765

Neighborhood Services Division (703) 228-3830

Arlington Economic Development (703) 228-0808
www.arlingtoneconomicdevelopment.com

Arlington Convention and Visitors Services (800) 296-7996
www.stayarlington.com

Department of Environmental Services (703) 228-6570

Department of Human Services (703) 228-1300

Department of Parks and Recreation (703) 228-4747

Arlington County Public Library (703) 228-3348



ARLINGTON
VIRGINIA

www.arlingtonva.us

Profile Web page: <https://www.arlingtonva.us/profile>

Profile Data: <https://data.arlingtonva.us/profile>